



CAD/CAM product catalogue

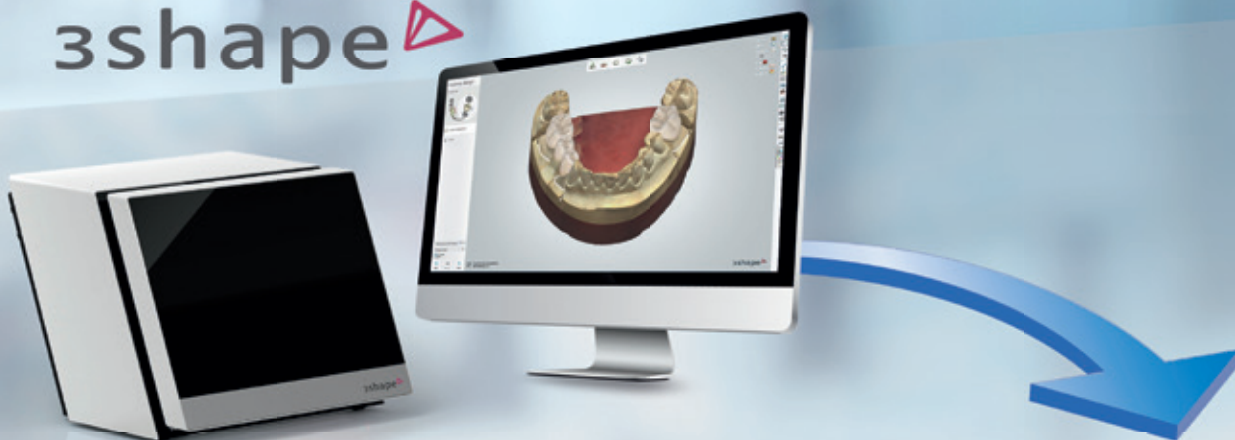
European Price List in € – 2017



Get connected!

For even more flexibility.
Download now the Zfx library for free!

3shape 



DIRECT SERVER
CONNECTION



**3shape
Software Update**
with latest Zimmer/Zfx
Implant Libraries compatible with Biomet 3i,
Camlog, Dentsply Implants, Megagen,
Nobel Biocare, Straumann, Zimmer ...

Zfx

Zfx

Download now the Zfx implant library
for free at: www.zfx-dental.com



Table of contents

CAD/CAM Hard- und Software

Zfx™ IntraScan	4
Zfx™ Shade	5
Zfx™ Evolution plus / Zfx™ Evolution plus+	6
Zfx™ CAD Software Upgrades	8
Zfx™ Inhouse5x wet & dry	10



CAD/CAM materials

Zfx™ Tools at a glance	12
Zfx™ Zirconium allround	20
Zfx™ Zirconium effect	21
Zfx™ Zirconium BionX ²	22
Zfx™ Zirconium Multilayer & High Translucent	24
Zfx™ Color Liquid allround & Zfx™ art.liners	28
Zfx™ Cobalt Chromium	30
Zfx™ Cobalt Chromium Eco	31
Zfx™ Titanium G5	32
Zfx™ PMMA	34
Zfx™ PU Accurate	35
Zfx™ Baltic Denture	36
Zfx™ Hybrid ceramic	38
Zfx™ Glass ceramic	39
Zfx™ Wax	41
Zfx™ Pre-Abutments	42



Construction components

Construction components	44
Zfx™ Accessories	46
Order form	50



Zfx™ IntraScan Zfx™ Shade

Optical impressions of the highest quality can be achieved with the Zfx™ IntraScan intraoral scanner due to innovative technology.

Zfx™ IntraScan is a lightweight handpiece which is connected to a notebook by means of a cable and weighs only 600 grams. The entire scanning technology is incorporated into the handpiece, removing the need for a complex workstation.



The intraoral scanner is used to digitally measure the condition of the bite and a 3D model is generated from the results. Both the hard and the soft tissue are modelled. Digital impressions taken with the Zfx™ IntraScan are used as a basis for the computer-controlled design and manufacture of implant and tooth-supported restorations. It is not necessary to apply scanning powder.

Zfx™ IntraScan & Software package

	Art. No.	Price (€)
<ul style="list-style-type: none"> × Zfx™ IntraScan × Zfx™ IntraScan software/open system × System package inclusive of DELL laptop PC system 		
Zfx list price (open system)	ZFX03001221	15,500.00
Zfx™ IntraScan software licence fee p.a.	ZFX13001231	790.00
Zfx Start-up training		on request



Zfx™ IntraScan matchholders are available in two sizes (4 and 7 mm) and are compatible with implant systems from Zimmer, Camlog, Nobel Biocare, Straumann and many more.



Zfx™ Shade enables tooth color to be determined accurately, quickly, easily and completely independently of ambient light.

Determining tooth color with the naked eye often presents a considerable challenge for the dentist. A tooth can have an optically different effect depending on the lighting conditions, and it is therefore not always possible to determine the correct color shade for a restoration. The Zfx™ Shade provides dentists with the perfect assistant for determining tooth color digitally. The patented unit

consists of a digital camera and a spectrophotometer with LED lighting. The unit enables spectral data to be evaluated extremely accurately, and the exact tooth color is determined without the effect of ambient light.

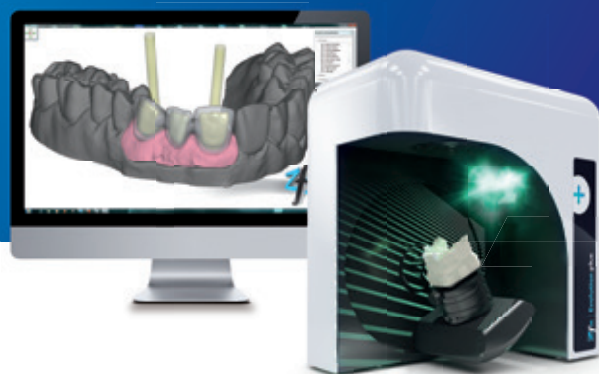
Zfx™ Shade package

	Art. No.	Price (€)
<ul style="list-style-type: none"> × Zfx™ Shade × Zfx™ Shade Software (3 licences) 		
Zfx list price	ZFX03000331	3,500.00



The Zfx™ Shade detects colors as they really are, independent of lighting conditions – quickly, accurately and reliably.

Zfx™ Evolution plus Zfx™ Evolution plus+



The Zfx™ Evolution series is perfectly catered to the individual needs of the dental technician.

The Zfx™ Evolution plus embodies a fully automatic stripe light scanner with open interface which has been specially developed by Zfx Innovation in Bolzano, Italy. The scanner can digitalise complete jaw models for constructing complex bridge frameworks with up to 14 links as well as articulated models.

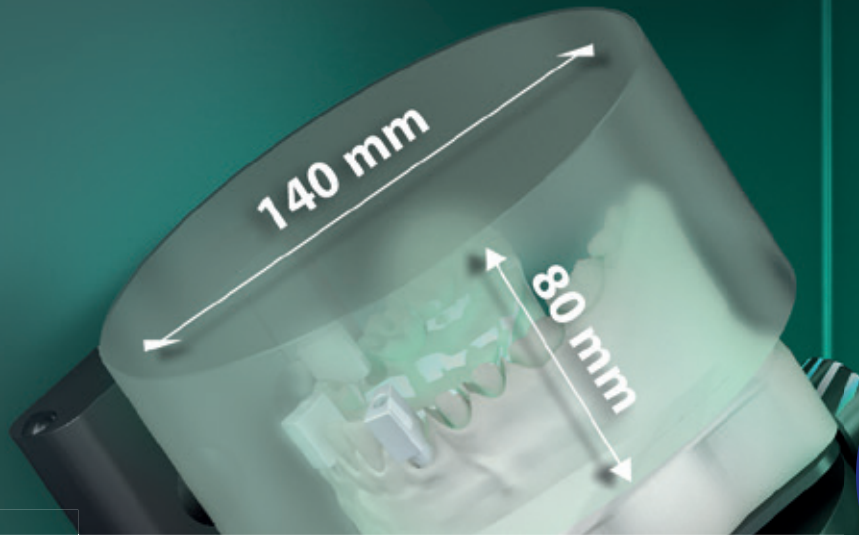
With scan speeds of less than 35 seconds for single preps and 70 seconds per model, Zfx provides not only one of the fastest but also one of the most precise CAD systems on the dental market. A forward-looking feature is the „Ready for 3D-Printing“ tool.

The +Upgrade: Zfx™ Evolution plus+

For those who still wants more the Zfx™ Evolution plus+ includes an additional “color camera” and is compatible with additional tools in the CAD software such as the “Texture Mapping” module.

Zfx™ Scanner- & Software package

Zfx™ Evolution plus package	Art. No.	Price (€)
<ul style="list-style-type: none"> × 3D-Scanner Zfx™ Evolution plus × Zfx™ CAD software / open system × PC unit with 22" TFT Display × Zfx™ Manager × Zfx™ Multi-Die Table × Zfx™ Multi-Die Software Upgrade 	ZFX03030001	19,950.00
Zfx list price (open system)		
Zfx™ Evolution plus+ package	Art. No.	Price (€)
<ul style="list-style-type: none"> × 3D-Scanner Zfx™ Evolution plus+ × Zfx™ CAD software / open system × PC unit with 22" TFT Display × Zfx™ Manager × Zfx™ Multi-Die Table × Zfx™ Multi-Die Software Upgrade × Color Camera × Texture Mapping 	ZFX03030002	22,450.00
Zfx list price (open system)		
	Art. No.	Price (€)
Zfx CAD software licence fee p.a.	ZFX13000767	390.00
Zfx Start-up training (At your Zfx partner; max. 2 technicians)		on request

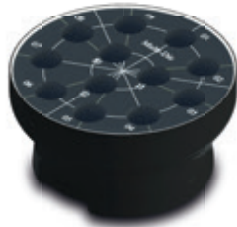


Measuring accuracy <math>< 9 \mu\text{m}^*</math>

Zfx™ Evolution series – components

Zfx™ Multi-Die Table

Scan up to 12 dies at once (must be used in combination with the Zfx™ Multi-Die Software Upgrade, see page 8).



	Art. No.	Price (€)
Zfx™ Multi-Die Table	ZFX02001227	590.00

Zfx™ Baltic Denture Holder Scan

For the recording of upper and lower jaw in one scan procedure only (more information regarding the Zfx™ Baltic Denture Sets can be found on page 36).



	Art. No.	Price (€)
Zfx™ Baltic Denture Holder Scan	ZFX02002070	149.00

Zfx™ Arti-Synchronizer

For an exact transfer of the model from the “real” to the “virtual” articulator. The module is available for different systems (original split-cast plates necessary).



	Art. No.	Price (€)
Zfx™ Arti-Synchronizer (system exclusive base plates)		
from ARTEX® 126 mm high	ZFX02001228	350.00
from ARTEX® 116 mm high	ZFX02001233	350.00
from SAM*	ZFX02001230	350.00
from STRATOS*	ZFX02001231	350.00
from KAVO*	ZFX02001232	350.00
from PANADENT*	ZFX02001234	350.00

Zfx™ Evolution plus+ Upgrade: Color Camera

The “Color Camera” – 2+1 technology offers high resolution and realistic color reproduction.



	Art. No.	Price (€)
Zfx™ Evolution plus+ Upgrade: Color Camera	ZFX03030003	2,500.00

* Measurement according to the VDI test procedure

Zfx™ CAD-Software Upgrades



Upgrade: Zfx™ Multi-Die

Function for scanning up to 12 dies in one scan (includes the necessary software function and appropriate accessories).

	Art. No.	Price (€)
Zfx™ Multi-Die	ZFX10001196	550.00



Upgrade: Zfx™ DICOM Viewer

For the visualization and storage of DICOM data (e.g. surgical templates).

	Art. No.	Price (€)
Zfx™ DICOM Viewer	ZFX10001020	600.00



Upgrade: Zfx™ Bite-Splint

Das Zfx™ Bite-Splint module allows the fast and high-quality construction of therapeutic bite splints.

	Art. No.	Price (€)
Zfx™ Bite-Splint	ZFX10001197	900.00



Upgrade: Zfx™ Virtueller Artikulator

Enables digitalisation and integration of articulated models (articulator systems Artex®, Protar®, SAM®, Stratos® and Panadent®) into the software.

	Art. No.	Price (€)
Zfx™ Virtueller Artikulator	ZFX10000657	1,000.00



Upgrade: Zfx™ Abutment Designer

Tool for designing custom implant abutments. The associated library includes connector geometries for all common implant systems.

	Art. No.	Price (€)
Zfx™ Abutment Designer	ZFX10000659	1,000.00



Upgrade: Zfx™ Bar Designer

Allows the digital design of all kinds of bars as well as the placement of separation attachments and Locators.

	Art. No.	Price (€)
Zfx™ Bar Designer	ZFX10000660	1,000.00



Upgrade: Zfx™ Provisional Crown & Bridges

Enables the fabrication of temporary restorations based on the scan (the anatomy is duplicated).

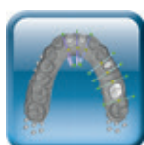
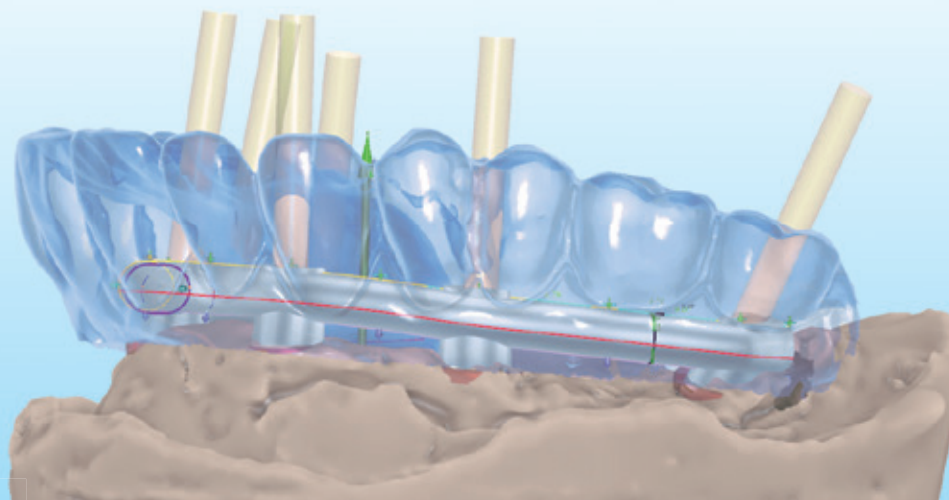
	Art. No.	Price (€)
Zfx™ Provisional Crown & Bridges	ZFX10001021	690.00



Upgrade: Zfx™ TruSmile

Module for displaying restorations in the software with almost photographic realism.

	Art. No.	Price (€)
Zfx™ TruSmile	ZFX10000665	400.00



Upgrade: Zfx™ Digital-intraModel

For digital model construction including analog libraries of various implant manufacturers.



Upgrade: The Art of Shape

Enhancement of library including different tooth shapes for individual and aesthetic reconstruction of prosthetic restorations.



	Art. No.	Price (€)
Zfx™ Digital-intraModel	ZFX10002335	1,200.00

	Art. No.	Price (€)
The Art of Shape	ZFX10002334	150.00



Upgrade: Tooth library "ZRS" by Manfred Wiedmann

Expansion of the tooth library with 118 designs (Sets for Upper and Lower, anterior and posterior teeth).



Upgrade: Baltic Denture System BDCreator® PLUS

For the digital design and manufacturing of complete acrylic dentures.

	Art. No.	Price (€)
Tooth library "ZRS"	ZFX10002336	600.00

	Art. No.	Price (€)
Baltic Denture System BDCreator® PLUS	1032138	1,400.00

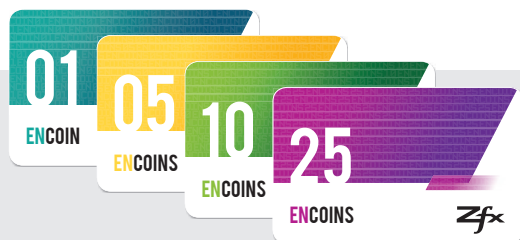
Binding Subscription Fee p.a.: € 220.00



Upgrade: Zfx™ Encode Converter - Software-Module

Software-module intended for the decoding of 3D information of BellaTek® Encode® Gingiva-former from Zimmer Biomet and for the construction of individual Encode® Abutments.

	Art. No.	Price (€)
Zfx™ Encode Converter - Software Modul	ZFX10001201	1,500.00



Zfx™ enCOIN Prepaid Card

The Zfx™ Encode Converter is simply activated by use of enCOINS obtained at Zfx Milling Centers and used to decode the STL model files generated from conventional or digital impressions. If the abutment and prosthetic work is produced at a Zfx Milling Center or Authorized Milling Lab, the user benefits from a discount at the value of the enCOINS spent for decoding.

Further information can be found at www.zfx-dental.com

	Value	Art. No.	Price (€)
Zfx™ enCoin Prepaid Card	1 enCOIN	ZFX10001202	15.00
	5 enCOINS	ZFX10001203	75.00
	10 enCOINS	ZFX10001204	150.00
	25 enCOINS	ZFX10001205	375.00

Zfx™ Inhouse5x wet & dry



With the Inhouse5x wet & dry, Zfx offers a compact milling unit suitable for 5-axis simultaneous machining that can be easily integrated into any laboratory.

The machine is equipped with a high-frequency spindle (6,000 to 100,000 rpm). Thus, together with a variety of milling strategies and tools, a faster and more economically efficient manufacturing process is guaranteed.

The Zfx™ Inhouse5x is suitable already in basic version for milling and grinding, resp. for the dry and wet processing, so various materials such as zirconia, ceramic, composite, PMMA, wax, cobalt chrome and titanium can be processed.

Zfx™ Inhouse5x wet & dry & CAM software package

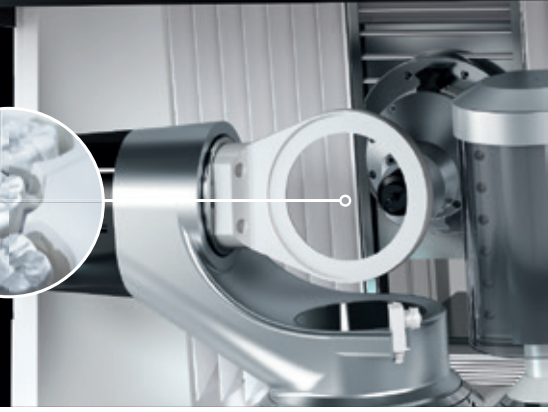
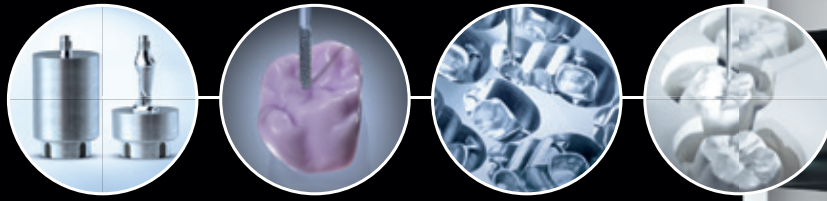
	Art. No.	Price (€)
<ul style="list-style-type: none"> ✗ Zfx™ Inhouse5x - Zfx Inhouse™ system (open) for simultaneous 5-axis milling in wet and dry mode ✗ Lower frame incl. suction and filter ✗ Zfx™ Inhouse5x - CAM software - EXPERT 5-Axis simultaneous HyperDENT ✗ PC Unit including TFT Display 	<ul style="list-style-type: none"> ✗ Zfx blank holder r2d2 ✗ Zfx™ Single-Block Holder for Sirona CEREC climbing system ✗ Zfx™ Cutting Oil ✗ Zfx™ Templates 	
Zfx list price (open system)	ZFX03002273	74,990.00
Installation and 3 days Zfx start-up local training (daily rate, ex works)	ZFX12000759	1,300.00
Zfx CAM Software Update Agreement p.a. (Strategies, templates, ... always up-to-date)	ZFX13000769	2,900.00

Zfx™ Inhouse5x Filter

	Art. No.	Price (€)
Coolant filter 100 µm for Zfx™ Inhouse5x	ZFX02010010	19.00
Suction filter für Zfx™ Inhouse5x	ZFX02010000	295.00
Swarf filter 45ppi for Zfx™ Inhouse5x	ZFX02010030	19.90

Sintering furnace

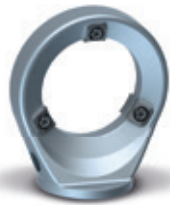
	Art. No.	Price (€)
Sintering furnace - DEKEMA Austromat 674	105268	10,950.00
Sintering furnace - DEKEMA Austromat 674i	105550	12,450.00



Zfx™ Inhouse5x components + options

Zfx™ Blankholder

Fixture for holding raw materials that are provided as blanks. (The Blankholder is included in the Zfx™ Inhouse5x wet & dry & CAM-Software Package).



	Art. No.	Price (€)
Zfx™ Blankholder	ZFX03002277	950.00

Zfx™ Single Blockholder

Fixture for single blocks (such as: IPS e.max®, VITA Suprinity®, IPS Empress® ...).



	Art. No.	Price (€)
Zfx™ Single Blockholder	ZFX02002075	390.00

Zfx™ Ceramic-Multi-Block Holder (up to 15 blocks)

Allows the positioning and management of different blocks (e.g.: IPS e.max®, VITA Suprinity®, IPS Empress® ...).



	Art. No.	Price (€)
Zfx™ Ceramic-Multi-Block Holder	ZFX02002073	1,250.00

Zfx™ Baltic Denture Holder Mill

Tool holder for the recording of Zfx™ Baltic Denture Blanks for the manufacturing of full dentures.



	Art. No.	Price (€)
Zfx™ Baltic Denture Holder Mill	ZFX02002071	799.00

Zfx™ Pre-Abutment Multi-Blank Holder

Tool holder for the placement of the Zfx™ Pre-Abutment Blanks with different geometries available to suit common implant manufacturers.



	Art. No.	Price (€)
Zfx™ Pre-Abutment Multi-Blank Holder	ZFX02002069	2,500.00

Zfx Upgrade: Multi-Unit Processing

Enables the multi-unit production for cobalt chrome, titanium, zirconium and PMMA.



	Art. No.	Price (€)
Zfx™ Multi-Unit Software CAM Upgrade	ZFX10001200	2,500.00

Option: Multiple CAM session

Enables opening and computation of various CAM sessions at the same time.

	Art. No.	Price (€)
Option: Multiple CAM session	ZFX10000663	490.00

Option: Multi machine CAM

Enables the activation of several machines with one CAM license only.

	Art. No.	Price (€)
Option: Multi machine CAM	ZFX10000668	600.00

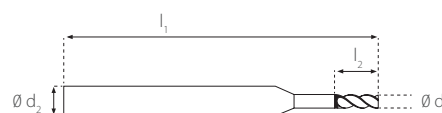
Zfx™ Tools at a glance



Zfx™ Tools

For the precise processing of dental materials, Zfx offers VHM milling tools that have been improved through years of experience involving over 100.000 restorations. Various cutting geometries and surfaces have been developed and produced. These improvements provide the highest quality and enhance key elements including: the tool life, tool cost and processing time, thus guarantee efficiency.

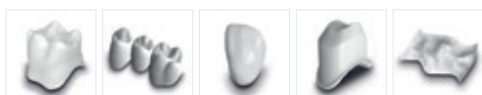
Direct feedback from production ensures short development cycles and enables quick response times. The Zfx milling tools assortment covers a wide range of applications and material options.



Zfx™ Zirconium Tools

VHM milling tools with the latest generation diamond coating ensure the excellent edge stability and running performance in wet and dry processing.

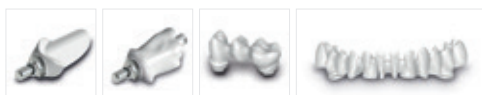
Zi Tools



- × Crown: anatomically reduced and fully anatomic
- × Bridge: anatomically reduced and fully anatomic
- × Partial Crown
- × Primary Telescope
- × Inlay, Onlay: anatomically reduced and fully anatomic
- × Veneer

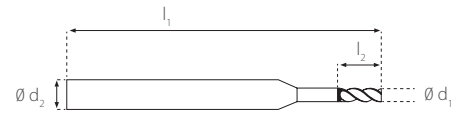
Tool ID	Ø Cutter (d ₁)	Length (l ₁)	Insert length (l ₂)	Art. No.	Price (€)
T20	2.00 mm	45 mm	20 mm	ZFX06000467	93.00
T15	1.50 mm	42 mm	15 mm	ZFX06000466	89.00
T10	1.00 mm	42 mm	10 mm	ZFX06000465	87.00
T5	0.60 mm	42 mm	6 mm	ZFX06000464	87.00

Zi Tools for screw-retained constructions



- × Individual Hybrid Abutment on Ti-base (2-P abutment)
- × Individual Hybrid Abutment on Ti-base (2-P abutment): anatomically reduced and fully anatomic
- × Screw retained bridges on Multi-Unit level: anatomically reduced and fully anatomic
- × Hybrid Abutment bridge on Ti-base bridge (2-P abutment bridge): anatomically reduced and fully anatomic

Tool ID	Ø Cutter (d ₁)	Length (l ₁)	Insert length (l ₂)	Art. No.	Price (€)
T20	2.00 mm	45 mm	20 mm	ZFX06000467	93.00
T15	1.50 mm	42 mm	15 mm	ZFX06000466	89.00
T10	1.00 mm	42 mm	10 mm	ZFX06000465	87.00
T5	0.60 mm	42 mm	6 mm	ZFX06000464	87.00
T51	1.00 mm	45 mm	10 mm	ZFX06002300	99.00
T42	2.00 mm	50 mm	20 mm	ZFX06002290	95.00
T41	1.50 mm	50 mm	20 mm	ZFX06002280	99.00



Zfx™ Cobalt Chromium Tools

VHM milling tools with special coatings and cutting geometries are available for all production steps – from rough cutting to fine finishing of the margin. The tools are suitable for wet and dry milling.

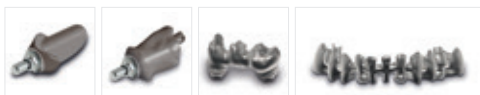
CoCr Tools for screw-retained constructions



- × Crown: anatomically reduced and fully anatomic
- × Crown, bridge: anatomically reduced and fully anatomic
- × Partial Crown
- × Primary Telescope
- × Inlay, Onlay: anatomically reduced and fully anatomic

Tool ID	Ø Cutter (d ₁)	Length (l ₁)	Insert length (l ₂)	Art. No.	Price (€)
T221	2.00 mm	40 mm	11.5 mm	ZFX06000519	69.00
T214	1.50 mm	40 mm	6 mm	ZFX06000480	46.00
T201	1.00 mm	40 mm	6 mm	ZFX06000478	49.00
T189	0.50 mm	40 mm	1.5 mm	ZFX06000479	53.00
T153	2.00 mm	40 mm	12 mm	ZFX06001244	99.00
T111	1.50 mm	40 mm	8 mm	ZFX06000476	49.00
T100	1.00 mm	40 mm	4 mm	ZFX06000481	46.00

CoCr Tools for screw-retained constructions

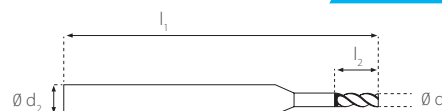


- × Individual Hybrid Abutment on Ti-base (2-P abutment)
- × Individual Hybrid Abutment on Ti-base (2-P abutment): anatomically reduced and fully anatomic
- × Screw retained bridges on Multi-Unit level: anatomically reduced and fully anatomic
- × Hybrid Abutment bridge on Ti-base bridge (2-P abutment bridge): anatomically reduced and fully anatomic

Tool ID	Ø Cutter (d ₁)	Length (l ₁)	Insert length (l ₂)	Art. No.	Price (€)
T221	2.00 mm	40 mm	11.5 mm	ZFX06000519	69.00
T214	1.50 mm	40 mm	6 mm	ZFX06000480	46.00
T201	1.00 mm	40 mm	6 mm	ZFX06000478	49.00
T189	0.50 mm	40 mm	1.5 mm	ZFX06000479	53.00
T153	2.00 mm	40 mm	12 mm	ZFX06001244	99.00
T111	1.50 mm	40 mm	8 mm	ZFX06000476	49.00
T100	1.00 mm	40 mm	4 mm	ZFX06000481	46.00
T413	2.60 mm	50 mm	25 mm	ZFX06002270	89.00
T411	2.20 mm	50 mm	21 mm	ZFX06002260	89.00
T409	1.50 mm	50 mm	21 mm	ZFX06002250	99.00
T260	1.00 mm	40 mm	4 mm	ZFX06002234	89.00
T176	1.00 mm	40 mm	6 mm	ZFX06002238	75.00
T171	1.50 mm	40 mm	4 mm	ZFX06002237	79.00
T170	1.00 mm	40 mm	2.5 mm	ZFX06002236	79.00
T158	1.50 mm	45 mm	15 mm	ZFX06000496	89.00
T156	1.50 mm	45 mm	16 mm	ZFX06000498	59.00
T154	2.00 mm	45 mm	16 mm	ZFX06000507	89.00
T151/ T251	1.50 mm	40 mm	8 mm	ZFX06002235	89.00
T151/ T251	1.50 mm	40 mm	8 mm	ZFX06002235	89.00

A wide range is available. For the most current information please see the safety data sheet at www.zfx-dental.com

Zfx™ Tools at a glance



Zfx™ Titanium Tools

VHM milling tools with special coatings for safe and efficient milling of titanium.

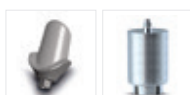
Ti Tools



- ✘ Crown: anatomically reduced and fully anatomic
- ✘ Bridge: anatomically reduced and fully anatomic
- ✘ Partial Crown
- ✘ Primary Telescope
- ✘ Inlay, Onlay: anatomically reduced and fully anatomic

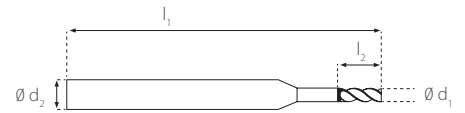
Tool ID	Ø Cutter (d ₁)	Length (l ₁)	Insert length (l ₂)	Art. No.	Price (€)
T621	2.00 mm	40 mm	11.5 mm	ZFX06000490	69.00
T614	1.50 mm	40 mm	6 mm	ZFX06000488	79.00
T601	1.00 mm	40 mm	6 mm	ZFX06000486	67.00
T589	1.50 mm	40 mm	1.5 mm	ZFX06000487	71.00
T511	1.50 mm	40 mm	8 mm	ZFX06000484	68.00
T500	1.00 mm	40 mm	4 mm	ZFX06000489	69.00
T153	2.00 mm	40 mm	12 mm	ZFX06001244	99.00

Ti Pre-Abutment Tools

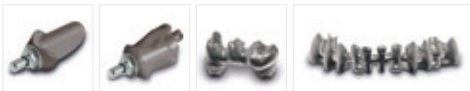


- ✘ Individual abutment from pre-manufactured abutment blank

Tool ID	Ø Cutter (d ₁)	Length (l ₁)	Insert length (l ₂)	Art. No.	Price (€)
T621	2.00 mm	40 mm	11.5 mm	ZFX06000490	69.00
T511	1.50 mm	40 mm	8 mm	ZFX06000484	68.00
T153	2.00 mm	40 mm	12 mm	ZFX06001244	99.00
T151/ T251	1.50 mm	40 mm	8 mm	ZFX06002235	89.00



Ti Tools for screw-retained constructions



- ✘ Individual Hybrid Abutment on Ti-base (2-P abutment)
- ✘ Individual Hybrid Abutment on Ti-base (2-P abutment): anatomically reduced and fully anatomic
- ✘ Screw retained bridges on Multi-Unit level: anatomically reduced and fully anatomic
- ✘ Hybrid Abutment bridge on Ti-base bridge (2-P abutment bridge): anatomically reduced and fully anatomic

Tool ID	Ø Cutter (d ₁)	Length (l ₁)	Insert length (l ₂)	Art. No.	Price (€)
T621	2.00 mm	40 mm	11.5 mm	ZFX06000490	69.00
T614	1.50 mm	40 mm	6 mm	ZFX06000488	79.00
T601	1.00 mm	40 mm	6 mm	ZFX06000486	67.00
T589	1.50 mm	40 mm	1.5 mm	ZFX06000487	71.00
T511	1.50 mm	40 mm	8 mm	ZFX06000484	68.00
T500	1.00 mm	40 mm	4 mm	ZFX06000489	69.00
T153	2.00 mm	40 mm	12 mm	ZFX06001244	99.00
T413	2.60 mm	50 mm	25 mm	ZFX06002270	89.00
T411	2.20 mm	50 mm	21 mm	ZFX06002260	89.00
T409	1.50 mm	50 mm	21 mm	ZFX06002250	99.00
T260	1.00 mm	40 mm	4 mm	ZFX06002234	89.00
T176	1.00 mm	40 mm	6 mm	ZFX06002238	75.00
T171	1.50 mm	40 mm	4 mm	ZFX06002237	79.00
T170	1.00 mm	40 mm	2.5 mm	ZFX06002236	79.00
T158	1.50 mm	45 mm	15 mm	ZFX06000496	89.00
T156	1.50 mm	45 mm	16 mm	ZFX06000498	59.00
T154	2.00 mm	45 mm	16 mm	ZFX06000507	89.00
T151/ T251	1.50 mm	40 mm	8 mm	ZFX06002235	89.00
T151/ T251	1.50 mm	40 mm	8 mm	ZFX06002235	89.00

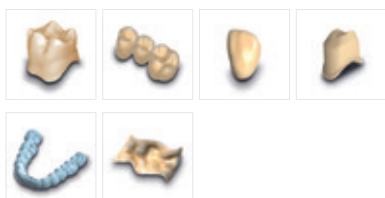
Zfx™ Tools at a glance



Zfx™ PMMA and Wax

Special cutting geometries for high-performance milling of all common plastic dental materials.

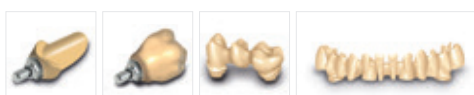
PMMA Tools



- × Crown: anatomically reduced and fully anatomic
- × Bridge: anatomically reduced and fully anatomic
- × Partial Crown
- × Primary Telescope
- × Veneer
- × Bitesplint
- × Inlay, Onlay: anatomically reduced and fully anatomic

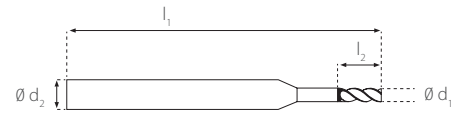
Tool ID	Ø Cutter (d ₁)	Length (l ₁)	Insert length (l ₂)	Art. No.	Price (€)
T21	2.00 mm	42 mm	15 mm	ZFX06000954	53.00
T16	1.50 mm	42 mm	10 mm	ZFX06000473	45.00
T11	1.00 mm	42 mm	8 mm	ZFX06000472	45.00
T6	0.60 mm	42 mm	6 mm	ZFX06000953	53.00

PMMA Tools for screw-retained constructions



- × Individual Hybrid Abutment on Ti-base (2-P abutment)
- × Individual Hybrid Abutment on Ti-base (2-P abutment): anatomically reduced and fully anatomic
- × Screw retained bridges on Multi-Unit level: anatomically reduced and fully anatomic
- × Hybrid Abutment bridge on Ti-base bridge (2-P abutment bridge): anatomically reduced and fully anatomic

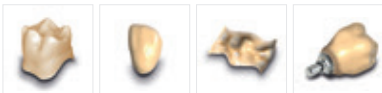
Tool ID	Ø Cutter (d ₁)	Length (l ₁)	Insert length (l ₂)	Art. No.	Price (€)
T21	2.00 mm	42 mm	15 mm	ZFX06000954	53.00
T16	1.50 mm	42 mm	10 mm	ZFX06000473	45.00
T11	1.00 mm	42 mm	8 mm	ZFX06000472	45.00
T6	0.60 mm	42 mm	6 mm	ZFX06000953	53.00
T413	2.60 mm	50 mm	25 mm	ZFX06002270	89.00
T411	2.20 mm	50 mm	21 mm	ZFX06002260	89.00
T409	1.50 mm	50 mm	21 mm	ZFX06002250	99.00
T260	1.00 mm	40 mm	4 mm	ZFX06002234	89.00
T176	1.00 mm	40 mm	6 mm	ZFX06002238	75.00
T171	1.50 mm	40 mm	4 mm	ZFX06002237	79.00
T170	1.00 mm	40 mm	2.5 mm	ZFX06002236	79.00
T158	1.50 mm	45 mm	15 mm	ZFX06000496	89.00
T156	1.50 mm	45 mm	16 mm	ZFX06000498	59.00
T154	2.00 mm	45 mm	16 mm	ZFX06000507	89.00
T151/ T251	1.50 mm	40 mm	8 mm	ZFX06002235	89.00
T151/ T251	1.50 mm	40 mm	8 mm	ZFX06002235	89.00



Zfx™ Glass- and Hybrid ceramic Tools

Diamond coated tools are available in various grain sizes for rough to fine finish.

Glass- and Hybrid ceramic Tools



- × Crown - anatomically reduced and fully anatomic
- × Partial Crown
- × Inlay, Onlay - anatomically reduced and fully anatomic
- × Hybrid Abutment bridge on Ti-base bridge (2-P abutment bridge): anatomically reduced and fully anatomic
- × Veneer

Tool ID	Ø Cutter (d ₁)	Length (l ₁)	Insert length (l ₂)	Art. No.	Price (€)
T123	2.00 mm	40 mm	12 mm	ZFX06000508	59,00
T122	1.00 mm	40 mm	10 mm	ZFX06000509	59,00
T121	0.60 mm	40 mm	10 mm	ZFX06000518	66,00

Zfx™ PU Accurate Tools

Special cutting geometries for high-performance milling of all common plastic dental materials.

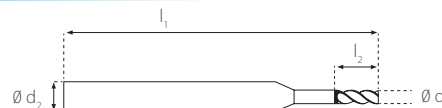
PU Accurate Tools



- × Crown - anatomically reduced and fully anatomic
- × Crown bridge - anatomically reduced and fully anatomic
- × Veneer
- × Primary Telescope
- × Inlay, Onlay - anatomically reduced and fully anatomic
- × Specimen

Tool ID	Ø Cutter (d ₁)	Length (l ₁)	Insert length (l ₂)	Art. No.	Price (€)
T162	4.00 mm	45 mm	16 mm	ZFX06000952	99,00
T21	2.00 mm	41 mm	15 mm	ZFX06000954	53,00
T16	1.50 mm	42 mm	10 mm	ZFX06000473	45,00
T11	1.00 mm	42 mm	8 mm	ZFX06000472	45,00
T6	0.60 mm	42 mm	6 mm	ZFX06000953	53,00

Zfx™ Tools at a glance



Zfx™ Baltic Denture Tools

Special cutting edge geometries for high-performance processing of soft materials in the dental field.

Baltic Denture Tools



Tool ID	Ø Cutter (d_1)	Length (l_1)	Insert length (l_2)	Art. No.	Price (€)
T33	3.00 mm	50 mm	15 mm	ZFX06002310	47.00
T23	2.00 mm	50 mm	20 mm	ZFX06002320	47.00

Zfx

THE GLOBAL LEADER IN DIGITAL DENTISTRY

- 10 Zfx Milling Centers
- 75 Zfx Authorized Milling Labs
- > 1,000 Scanners in the market
- > 150,000 Milling Units p.a.



Zfx™ Zirconium allround

Zfx™ Zirconium effect



Zfx™ Zirconium allround

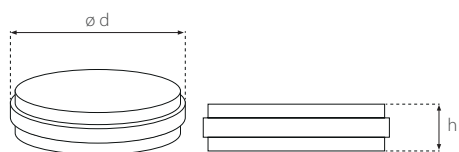
The pre-sintered Zfx™ Zirconium allround, consists of a homogeneous microstructure features an extremely high tensile strength during processing, excellent edge stability and long-term hydrothermal resistance. The material is highly biocompatible and avoids the unpleasant taste of metal and hot/cold conductivity. This zirconium is suitable for crowns, bridges, inlays, onlays, bars, implant bridges and attachments.

Physical properties

Density (after sintering operation)	g/cm ³	> 6.0
E-module	GPa	> 200
CTE (25 - 500°C)	10 ⁻⁶ K ⁻¹ CTE	10.5
Crack toughness	MPa*m ^{1/2}	> 9
Bending strength	MPa	1,200 (± 200)
Open porosity	%	0

Chemical composition

Zirconium oxide	ZrO ₂	88 - 96 %
Yttrium oxide	Y ₂ O ₃	4 - 6 %
Hafnium oxide	HfO ₃	1 - 5 %
Aluminium oxide	Al ₂ O ₃	0 - 1 %



Zfx™ Zirconium allround Blanks

Diameter d (mm)	Height h (mm)	Color	Art. No.	Price (€)
98	10	0.00	ZFX08000522	82.00
98	12	0.00	ZFX08000523	87.00
98	14	0.00	ZFX08000524	89.00
98	16	0.00	ZFX08000525	99.00
98	18	0.00	ZFX08000526	104.00
98	20	0.00	ZFX08000527	107.00
98	25	0.00	ZFX08000528	115.00

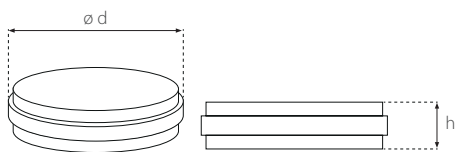


Zfx™ Zirconium effect

Zfx™ Zirconium effect combines the material properties of Zfx™ Zirconium allround with a significant increase in translucency. The material has a high esthetic value while providing all the benefits of zirconium dioxide. Indications include crowns, bridges, inlays and onlays.

Physical properties		
Density (after sintering operation)	g/cm ³	> 6.0
E-module	GPa	> 200
CTE (25 - 500°C)	10 ⁻⁶ K ⁻¹ CTE	10.5
Crack toughness	MPa*m ^{1/2}	> 6
Bending strength	MPa	1,200 (± 200)
Open porosity	%	0

Chemical composition		
Zirconium oxide	ZrO ₂	70 - 100 %
Yttrium oxide	Y ₂ O ₃	3 - 15 %
Hafnium oxide	HfO ₃	1 - 5 %
Aluminium oxide	Al ₂ O ₃	0 - 1 %



Zfx™ Zirconium effect Blanks

Diameter d (mm)	Height h (mm)	Art. No.	Price (€)
98	10	ZFX08000539	90.00
98	12	ZFX08000540	96.00
98	14	ZFX08000541	99.00
98	16	ZFX08000542	109.00
98	18	ZFX08000543	115.00
98	20	ZFX08000544	118.00
98	25	ZFX08000545	127.00

Zfx™ Zirconium Tools + Zfx™ Zirconium Tools for screw-retained constructions

Detailed information can be found on pages 12 to 18.



Zfx™ Zirconium BionX²

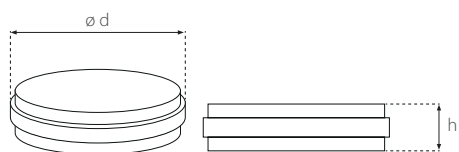


Zfx™ Zirconium BionX²

The new Zfx™ BionX² is a translucent, stable zirconium oxide that sets new material standards. Due to the cubic-tetragonal mixed microstructure, a light transmission that has not been achieved up to now, is combined with excellent mechanical properties. The result is a biocompatible, high-performance ceramic (type II, class 5) for full-contour inlays, onlays, veneers and up to three-unit bridges.

Physical properties		
Density (after sintering operation)	g/cm ³	> 6.0
E-module	GPa	> 210
CTE (25 - 500°C)	10 ⁻⁶ K ⁻¹ CTE	10
Crack toughness	MPa*m ^{1/2}	> 4.8
Bending strength	MPa	> 720

Chemical composition		
Zirconium oxide	ZrO ₂	70 - 100 %
Yttrium oxide	Y ₂ O ₃	3 - 15 %
Hafnium oxide	HfO ₃	1 - 5 %
Aluminium oxide	Al ₂ O ₃	0 - 1 %



Zfx™ Zirconium BionX² Blanks

Diameter d (mm)	Height h (mm)	Art. No.	Price (€)
98	10	ZFX08000491	124.00
98	12	ZFX08000492	139.00
98	14	ZFX08000493	149.00
98	16	ZFX08000494	165.00
98	18	ZFX08000495	182.00
98	20	ZFX08000496	189.00
98	25	ZFX08000497	215.00

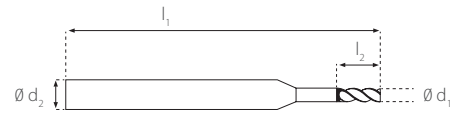


NEW

Zfx™ BionX²

Zfx™ Zirconium Tools + Zfx™ Zirconium Tools for screw-retained constructions

Detailed information can be found on pages 12 to 18.



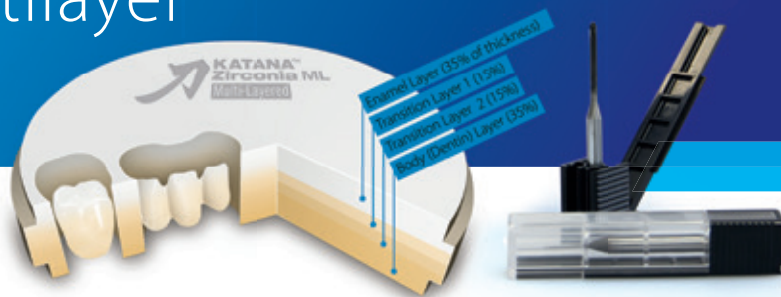
"The Art of Shape" Three modules for Aesthetics

Simply clever: Zfx Dental introduces "The Art of Shape" a superior product line for the fabrication of high aesthetic zirconia restorations. "The Art of Shape" is the perfect solution to economically produce highly aesthetic restorations, allowing you to easily compete against low-end dental prostheses. First, the crowns are custom designed, and, if applicable, reduced for the veneering (cut-back) through assistance of the **Zfx tooth libraries**. The framework is then milled out of a **Zfx™ BionX²** zirconia blank, coloured with **Zfx™ Color Liquid allround** and the **Zfx™ art.liners** to achieve a beautiful finished product. Veneers – if requested – can be completed in only a few steps, normally requiring only one firing.



A wide range is available. For the most current information please see the safety data sheet at www.zfx-dental.com

Zfx™ Zirconium Multilayer & High Translucent

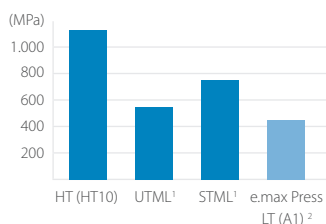


KATANA™ Zirconium

KATANA™ Zirconium series have different levels of translucency and mechanical properties according to their application. Select the right series for your application using the following table:

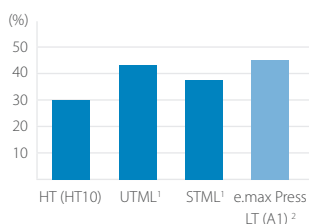
Flexural Strength (Three-point bending test)

According to ISO 6872 : 2008, Sample Size: 3 x 4 x 40 mm



Translucency

Wave length of light: 700 nm, Thickness of sample: 0.5 mm



Recommended and Indicated Application

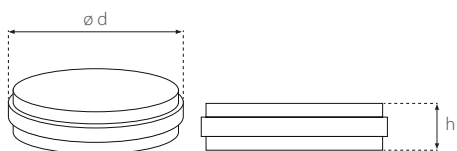
KATANA™ Zirconium	UTML	STML	HT / ML³
Anterior	Crown	• • •	•
	Veneer	• • •	•
Posterior	Crown	• •	• • •
	Inlay / Onlay	• •	•
Bridge	Anterior 3-unit	•	• •
	Posterior 3-unit	-	•
	4 units or more	-	• • •
Framework	-	-	• • •
Properties	Translucency	[Progressive bar from HT to ML]	
	Flexural strength	[Progressive bar from HT to ML]	

The number of check marks (•) indicates the degree to which the material is recommended for the listed application. The bar (-) means that it is not recommended.
 ¹ Evaluated by base material (white color); ² Not trademark of Kuraray Co., Ltd. Date source: Kuraray Noritake Dental Inc.
 ³ KATANA™ Zirconium HT/Multilayer is a high strength zirconia

KATANA™ Zirconium Multilayer

The KATANA™ blank, consisting of four pre-shaded layers, enables an proficient production of very natural restorations without staining or dipping as the soft cervical, dentin and enamel shades are already intergrated in the blank. Without additional steps, frameworks and full-contour restorations with natural color gradations can be created. The workflow is reduced to a minimum. Error-prone steps are eliminated and the results are reproducible.

Translucency of 1.0 mm thickness



KATANA™ Zirconium Multilayer Blanks

Diameter d (mm)	Height h (mm)	Color / Art. No.						Price (€)
		A-White	A-Light	A-Dark	B-Light	C-Light	D-Light	
98	14	125-2702EU	125-2162EU	125-2192EU	125-2222EU	125-2642EU	125-2672EU	179.00
98	18	125-2713EU	125-2173EU	125-2203EU	125-2233EU	125-2653EU	125-2683EU	209.00
98	22	125-2724EU	125-2184EU	125-2214EU	125-2244EU	125-2664EU	125-2694EU	249.00

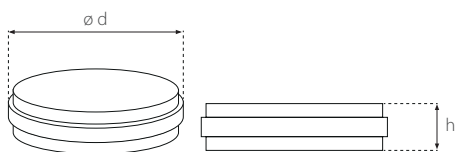
A wide range is available. For the most current information please see the safety data sheet at www.zfx-dental.com



KATANA™ Zirconium STML

KATANA™ Zirconium STML (Super Translucent Multi Layered) Blanks are composed of 4 color gradients and are characterized by a high, natural translucency. The material is perfect for the manufacturing of aesthetic restorations such as crowns, bridges, veneers and inlays/onlays.

Color				
NW	A1	A2	A3	A3.5

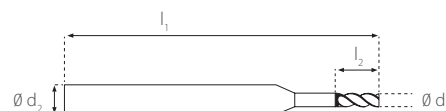


KATANA™ Zirconium STML Blanks

Diameter d (mm)	Height h (mm)	Color / Art. No.					Price (€)
		NW	A1	A2	A3	A3.5	
98	14	125-3242EU	125-3122EU	125-3152EU	125-3182EU	125-3212EU	179.00
98	18	125-3253EU	125-3133EU	125-3163EU	125-3193EU	125-3223EU	209.00
98	22	125-3264EU	125-3144EU	125-3174EU	125-3204EU	125-3234EU	249.00

Zfx™ Zirconium Tools + Zfx™ Zirconium Tools for screw-retained constructions

Detailed information can be found on pages 12 to 18.

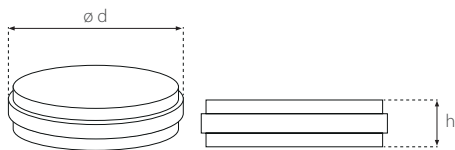


Zfx™ Zirconium Multilayer & High Translucent



KATANA™ Zirconium UTML

KATANA™ Zirconium UTML (Ultra Translucent Multi Layered) Blanks are also composed of 4 shaded color gradients. Due to the very high translucency and the natural color gradient the blanks are ideal for aesthetic anterior and posterior restorations, such as veneers and anterior crowns. Moreover the blanks comply with the VITA shade guide (VITA classical A1 - D4®).



Color									
A1	A2	A3	A3.5	A4					
B1	B2	B3	B4						
C1	C2	C3	C4	D2	D3	D4			
ENW	EA1	EA2	EA3						

KATANA™ Zirconium UTML Blanks

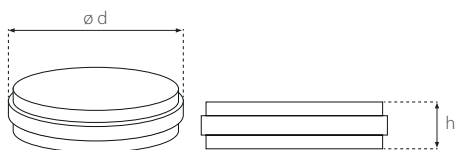
Diameter d (mm)	Height h (mm)	Color / Art. No.					Price (€)
		A1	A2	A3	A3.5	A4	
98	14	125-3842EU	125-3872EU	125-3902EU	125-3932EU	125-3962EU	179.00
98	18	125-3853EU	125-3883EU	125-3913EU	125-3943EU	125-3973EU	209.00
		B1	B2	B3	B4		
98	14	125-3992EU	125-4022EU	125-4052EU	125-4082EU		179.00
98	18	125-4003EU	125-4033EU	125-4063EU	125-4093EU		209.00
		C1	C2	C3	C4		
98	14	125-4112EU	125-4142EU	125-4172EU	125-4202EU		179.00
98	18	125-4123EU	125-4153EU	125-4183EU	125-4213EU		209.00
		D2	D3	D4			
98	14	125-4232EU	125-4262EU	125-4292EU			179.00
98	18	125-4243EU	125-4273EU	125-4303EU			209.00
		ENW	EA1	EA2	EA3		
98	14	125-3392EU	125-3302EU	125-3332EU	125-3362EU		179.00
98	18	125-3403EU	125-3313EU	125-3343EU	125-3373EU		209.00
98	22	125-3414EU	125-3324EU	125-3354EU	125-3384EU		249.00

A wide range is available. For the most current information please see the safety data sheet at www.zfx-dental.com



KATANA™ Zirconium HT

KATANA™ Zirconium HT (High Translucent) are white high translucent blanks, that are perfectly suited for the purposes of individual colouring. The high translucency meets all aesthetic requirements. A low monoclinic transformation guarantees excellent durability at a lower temperature.

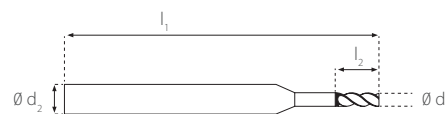


KATANA™ Zirconium HT Blanks

Diameter d (mm)	Height h (mm)	Color / Art. No.			Price (€)
		HT	HT12	HT13	
98	10	125-2111EU	125-2251EU	125-2301EU	109.00
98	14	125-2122EU	125-2262EU	125-2312EU	139.00
98	18	125-2133EU	125-2273EU	125-2323EU	179.00
98	22	125-2144EU	125-2284EU	125-2334EU	219.00
98	26	125-2155EU	125-2295EU	125-2345EU	249.00

Zfx™ Zirconium Tools + Zfx™ Zirconium Tools for screw-retained constructions

Detailed information can be found on pages 12 to 18.



Zfx™ Color Liquid allround Zfx™ art.liners



Zfx™ Color Liquid allround

The Zfx™ Color Liquids allround for zirconium dioxide provide the ideal basis for the staining full-contour as well as veneered zirconium restorations. To create a successful full-ceramic or veneered all-ceramic restoration, an efficient production process in the lab is critical. Zfx™ Color Liquids allround offers a staining system that is suitable for all kinds of zirconium.

Zfx™ Liquid allround - Dentin colors according to Vita®

for dipping and painting techniques

Dimension (ml)	Color	Art. No.	Price (€)
100	A1	ZFX02003017	59.90
100	A2	ZFX02003018	59.90
100	A3	ZFX02003019	59.90
100	A3.5	ZFX02003020	59.90
100	A4	ZFX02003021	59.90
100	A4+	ZFX02003022	59.90
100	B1	ZFX02003023	59.90
100	B2	ZFX02003024	59.90
100	B3	ZFX02003025	59.90
100	B4	ZFX02003026	59.90
100	B4+	ZFX02003027	59.90
100	C1	ZFX02003028	59.90
100	C2	ZFX02003029	59.90
100	C3	ZFX02003030	59.90
100	C4	ZFX02003031	59.90
100	C4+	ZFX02003032	59.90
100	D2	ZFX02003033	59.90
100	D3	ZFX02003034	59.90
100	D3+	ZFX02003035	59.90
100	D4	ZFX02003036	59.90
100	D4+	ZFX02003037	59.90

Zfx™ Liquid allround - incisal colors

for occlusal and incisal characterization

Dimension (ml)	Color	Art. No.	Price (€)
30	dark pink	ZFX02003054	59.90
30	light pink	ZFX02003055	59.90
30	dark grey	ZFX02003056	59.90
30	light grey	ZFX02003057	59.90
30	dark brown	ZFX02003058	59.90
30	light brown	ZFX02003059	59.90

Zfx™ Liquid allround - effect colors

for tinting of dentin colors or occlusal characterization

Dimension (ml)	Color	Art. No.	Price (€)
15	Incisal SA 1	ZFX02003049	14.90
15	Incisal SA 2	ZFX02003050	14.90
15	Incisal SC 1	ZFX02003051	14.90
15	Incisal SC 2	ZFX02003052	14.90
15	Incisal SO	ZFX02003053	14.90

Zfx™ Variation Liquid allround

for lightening of the dentin shades

Dimension (ml)	Art. No.	Price (€)
30	ZFX02003015	22.90
100	ZFX02003016	59.90



Zfx™ Color Liquid allround - Set

The Zfx™ Color Liquid allround - Set includes all relevant liquids for the production of aesthetic full-contour zirconia restorations. The dentin colors are also suitable for staining veneered crowns and frameworks.

Delivery contents Set

- × 16 bottles (30 ml) dentin colors
- × 5 bottles (15 ml) incisal colors
- × 40 brushes for dipping

	Art. No.	Price(€)
Liquid Set	ZFX02003014	399.00



Zfx™ art.liniers

The Zfx™ art.liniers, a set consisting of 5 different brushes, are perfectly suitable for the manufacturing of fully anatomical zirconium works. Each brush-tip is intended for a certain purpose – from the painting of the unsintered zirconium to the application of the glazing material on the finished work. The brush handle is ergonomically formed and fits perfectly into the hand. The triangular shape is the basis for the no.roll system, a roll off from the table is prevented.

Delivery contents Set

- × color.linier: Coloring brush for the application of finest color portions (Brush size: -10)
- × glasur.linier: Glasur brush for the application of finest glasur portions (Brush size: 1)
- × +color.linier: Color brush for the application of coloring big zirconia bridges (Brush size: 6)
- × individual.linier: Individual brush for the application before and after sintering (Brush size: 4)
- × gingiva.linier: Gingiva brush for the application coloring gingiva before sintering (Brush size: 8)



	Art. No.	Price (€)
art.liniers	ZFX02003013	59.00

A wide range is available. For the most current information please see the safety data sheet at www.zfx-dental.com

Zfx™ Cobalt Chromium

Zfx™ Cobalt Chromium Eco



Zfx™ Cobalt Chromium

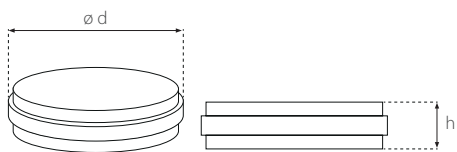
Zfx™ Cobalt Chromium is a beryllium-nickel-free non-precious alloy made from cobalt chromium. The material is suitable for the production of crowns and bridges, one-piece abutments and implant supported supra-structures. Characterized by its reduced hardness, the CoCr blank is well-suited for milling and ceramic veneering.

Physical properties

Density	g/cm ³	8.55
Hardness	HV 10/30	285
E-module	GPa	240
CTE (25 - 500°C)	10 ⁻⁶ K ⁻¹ CTE	14.5
Yield Strength	MPa	375
Tensile strength	MPa	525
Percentage elongation	%	14.7

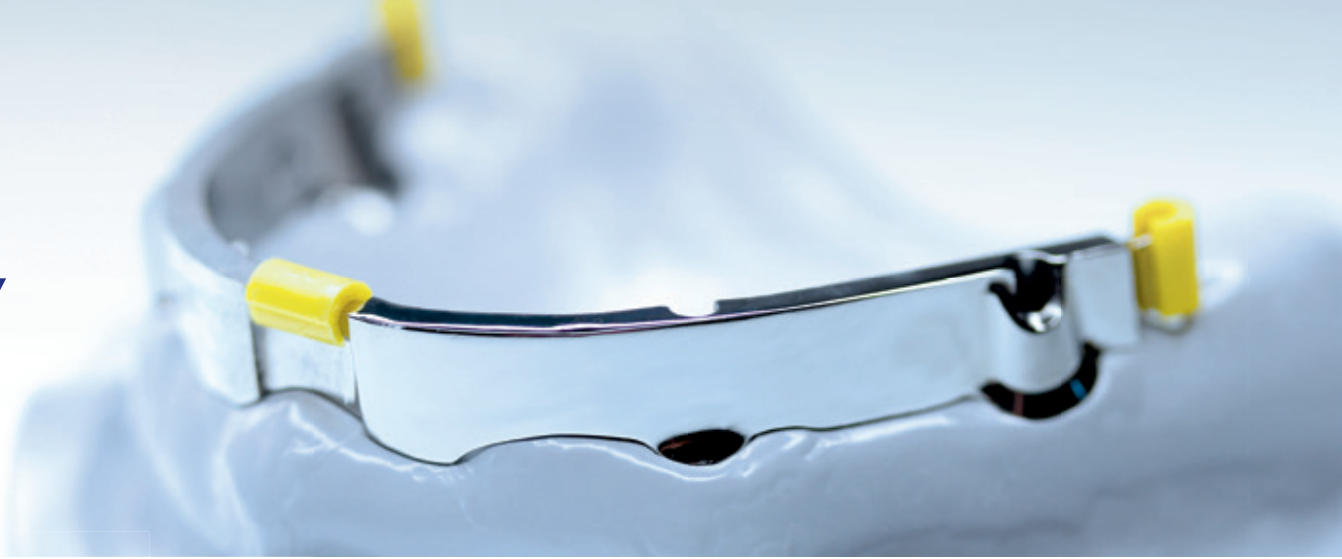
Chemical composition

Cobalt	Co	50 - 70 %
Chrom	Cr	19 - 30 %
Silicon	Si	0 - 2 %



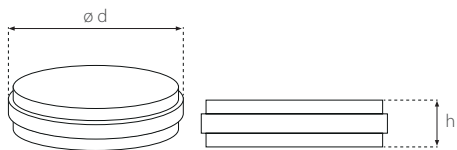
Zfx™ Cobalt Chromium Blanks

Diameter d (mm)	Height h (mm)	Art. No.	Price (€)
98	10	ZFX08000561	139.00
98	12	ZFX08000562	149.00
98	13.5	ZFX08000563	166.00
98	15	ZFX08000564	175.00
98	18	ZFX08000565	193.00
98	20	ZFX08000609	193.00
98	24.5	ZFX08000566	210.00



Zfx™ Cobalt Chromium Eco

With the industrially manufactured Zfx™ Cobalt Chromium Eco Blanks, Zfx is able to provide a material that offers a cost-effective solution in the production of high-quality dental prosthetics. The material has been specifically optimized for the requirements of the Zfx™ Inhouse5x and is characterized by excellent milling properties along with limited milling tool wear. The blanks, free of nickel and beryllium, are suitable for single crowns as well as for complex implant restorations or ceramic veneering.



Physical properties		
Density	g/cm ³	8.8
Hardness	HV 5/30	300
E-module	GPa	200
CTE (25 - 500°C)	10 ⁻⁶ K ⁻¹ CTE	14.4
Yield Strength	MPa	300
Tensile strength	MPa	610
Percentage elongation	%	5

Chemical composition		
Cobalt	Co	50 - 100 %
Chrom	Cr	25 - 50 %

Zfx™ Cobalt Chromium Eco Blanks

Diameter d (mm)	Height h (mm)	Art. No.	Price (€)
98	10	ZFX08000810	116.00
98	12	ZFX08000812	127.00
98	13.5	ZFX08000813	141.00
98	15	ZFX08000815	149.00
98	18	ZFX08000818	164.00
98	20	ZFX08000820	179.00

Zfx™ Cobalt Chromium Tools + Zfx™ Cobalt Chromium Tools for screw-retained constructions

Detailed information can be found on pages 12 to 18.



Zfx™ Titanium G5

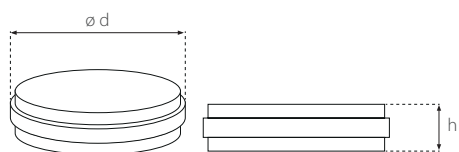


Zfx™ Titanium G5

The high-quality titanium alloy features consistent quality and provides high fracture and hardness values. Thus, the titanium blank is ideal for the fabrication of crowns and bridges in both anterior and posterior regions for implant and bar reconstructions. All commercially available low-fusing ceramics can be used for veneering.

Physical properties		
Density	g/cm ³	4.43
Hardness	HV 10/30	353
E-module	GPa	114
CTE (25 - 500°C)	10 ⁻⁶ K ⁻¹ CTE	10.3
Yield Strength	MPa	836
Tensile strength	MPa	897
Percentage elongation	%	12

Chemical composition		
Titanium	Ti	~ 90 %
Ferrum	Fe	0.13 %
Aluminium	Al	6.0 %
Vanadium	V	4.1 %
Oxygen	O	0.1 %
Hydrogen	H	0.001 %
Nitrogen	N	0.01 %
Carbon	C	0.03 %



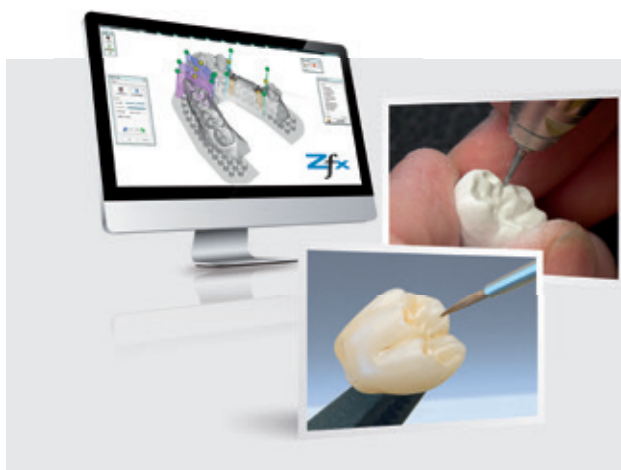
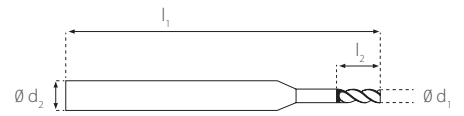
Zfx™ Titanium G5 Blanks

Diameter d (mm)	Height h (mm)	Art. No.	Price (€)
98	10	ZFX08000710	88.00
98	12	ZFX08000712	98.00
98	13.5	ZFX08000713	105.00
98	15	ZFX08000715	114.00
98	16	ZFX08000716	118.00
98	18	ZFX08000718	132.00
98	20	ZFX08000720	141.00
98	22	ZFX08000722	150.00
98	24.5	ZFX08000724	159.00



Zfx™ Titanium Tools + Zfx™ Titanium Tools for screw-retained constructions

Detailed information can be found on pages 12 to 18.



Zfx Aesthetic Workshops

Learn more about the production of aesthetic restorations by attending a Zfx Aesthetic Workshop. Experts share their knowledge in an informative and practical format – from designing with the Zfx™ Model Creator up to milling and staining with Vita Accent Plus Glaze and the Zfx™ Color Liquid allround.

All current dates as well as the complete Zfx training program can be found at www.zfx-dental.com

Zfx™ PMMA

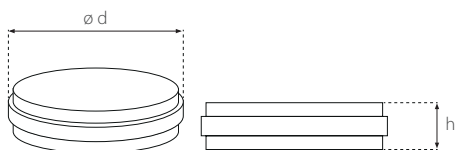
Zfx™ PU Accurate



Zfx™ PMMA

Thermoplastic PMMA, consisting of carbon chains, is characterized by its high fracture and bending strength along with excellent biocompatibility. The material is extremely color-stable and possesses a high translucency. The dense material microstructure ensures resistance against stain. PMMA is suitable for the fabrication of temporary crowns, bridges, inlays and onlays.

The Safety Data Sheets with all physical properties and chemical compositions can be found at www.zfx-dental.com

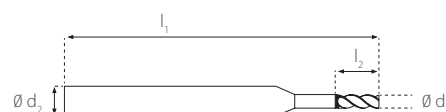


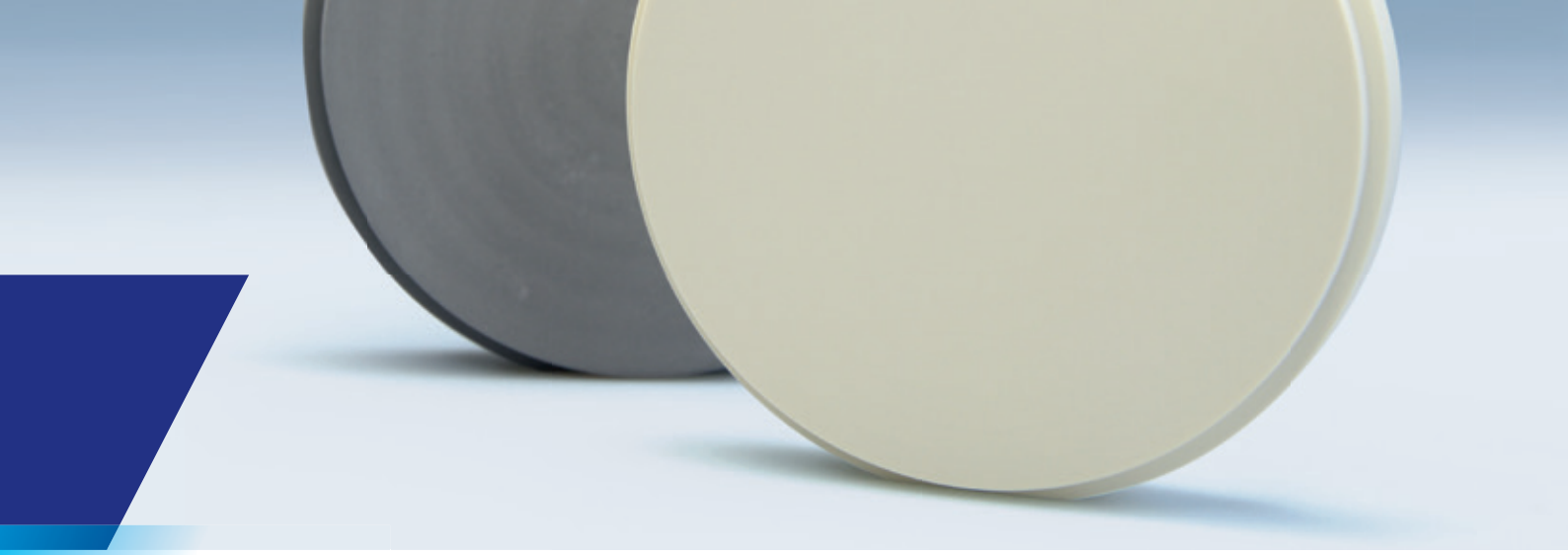
Zfx™ PMMA Blanks

	Color	Diameter d (mm)	Height h (mm)	Art. No.	Price (€)
Zfx™ PMMA color	A	98.5	20	ZFX08002253	89.00
Zfx™ PMMA color	A4	98.5	20	ZFX08002254	89.00
Zfx™ PMMA color	B	98.5	20	ZFX08002255	89.00
Zfx™ PMMA color	B1	98.5	20	ZFX08002256	89.00
Zfx™ PMMA color	B4	98.5	20	ZFX08002257	89.00
Zfx™ PMMA color	C	98.5	20	ZFX08002258	89.00
Zfx™ PMMA multicolor	A1 - A2	98.5	20	ZFX08002259	107.00
Zfx™ PMMA multicolor	A2 - A3	98.5	20	ZFX08002260	107.00
Zfx™ PMMA multicolor	A2 - A3.5	98.5	20	ZFX08002261	107.00
Zfx™ PMMA pink	pink	98.5	20	ZFX08002250	89.00
ZENOTEC PMMA cast	cast	98	18	ZFX08000549	79.00
Zfx™ PMMA transparent bite	transparent bite	98.5	20	ZFX08002252	79.00

Zfx™ PMMA Tools + Zfx™ PMMA Tools for screw-retained constructions

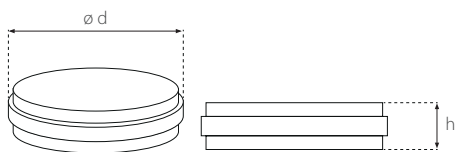
Detailed information can be found on page 12 - 15.





Zfx™ PU Accurate

The Zfx™ PU Accurate is characterized by form stability, breakage resistance and excellent cutting properties. The material is easily and quickly milled. It is suitable for model fabrication using CAD/CAM technology and digital impressions.



Physical properties	ivory / grey	
Density	g/cm ³	1.0 / 1.0
Shore Hardness		D 75 / D 76
E-module	MPa	1.800 / 1.850
Bending strength	MPa	48 / 50
Tensile strength	MPa	47 / 48
Impact strength	kJ/m ²	13 / 14
Heat resistance	°C	85 / 90
Linear coefficient of thermal expansion	K ⁻¹	55 x 10 ⁻⁶ / 50-55 x 10 ⁻⁶

Zfx™ PU Accurate Blanks

Diameter d (mm)	Height h (mm)	Color	Art. No.	Price (€)
98	12	ivory	ZFX08002270	20.00
98	12	grey	ZFX08002271	20.00
98	16	ivory	ZFX08002272	22.00
98	16	grey	ZFX08002273	22.00
98	20	ivory	ZFX08002268	23.00
98	20	grey	ZFX08002269	23.00
98	26	ivory	ZFX08002274	24.00
98	26	grey	ZFX08002275	24.00

Zfx™ PU Accurate Tools

Detailed information can be found on pages 12 to 18.



Zfx™ Baltic Denture



Zfx™^{BD}Key® Set

Zfx™ Baltic Denture

With the Zfx™ Baltic Denture System, full dentures of highly cross linked PMMA can be produced. Within the milling blanks the dental arches are already included in functional and aesthetic positioning. The perfect positioning of the row of teeth is fixed with the help of the Zfx™ Baltic Denture KEY® Set according to functional and aesthetic aspects.

Physical properties		
Residual monomer content	%	under 1
Bending Strength	MPa	> 90
Water Absorption	µg/mm ³	> 32

Zfx™ Baltic Denture System Sets

	Zfx™ Evolution Baltic Denture Set	Zfx™ Milling Lab Baltic Denture Set
	Art. No.: ZFX02000270	Art. No.: ZFX02000271
Zfx™ Baltic Denture System ^{BD}Key® Set consisting of 3 pc. ^{BD} KEY® (UpperKEY & LowerKEY), ^{BD} KEY® Lock, ^{BD} KEY® Plane, ^{BD} KEY® Fin, ^{BD} KEY® Connect	2x	2x
Zfx™ Baltic Denture Holder Scan for the Zfx™ Evolution	1x	1x
Baltic Denture System ^{BD}Creator® PLUS (Software)	1x	1x
Zfx™ Baltic Denture Holder Mill for the Zfx™ Inhouse5x		1x
Zfx ^{BD}Load® Starterkit consisting of UJ (upper jaw) small, LJ (lower jaw) small, UJ medium, LJ medium, UJ large, LJ large; in each case in color A2 and span "M".		1x
	Set Price: € 3,490.00	Set Price: € 4,990.00



Zfx™ Baltic Denture Holder Scan for the Zfx™ Evolution



Zfx™ Baltic Denture Holder Mill for the Zfx™ Inhouse5x



Zfx 80Load® Starterkit

Zfx™ Baltic Denture Holder

	Art. No.	Price (€)
Zfx™ Baltic Denture Holder Scan for the Zfx™ Evolution	ZFX02002070	149.00
Zfx™ Baltic Denture Holder Mill for the Zfx™ Inhouse5x	ZFX02002071	799.00

Zfx™ Baltic Denture

Detailed information can be found on pages 12 to 18.



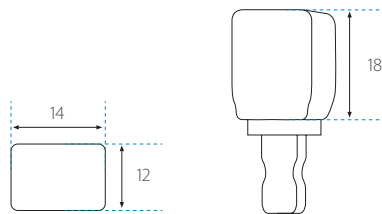
Zfx™ Hybrid ceramic

Zfx™ Glass ceramic



VITA Enamic®

VITA ENAMIC® is a dental hybrid ceramic with dual network structure. The dominating ceramic network is strengthened by a polymer network, whereby both networks penetrates each other (polymer network ~ 14 weight.-%, ceramic network ~ 86 weight.-%). Hybrid ceramics are characterized by high durability, superior aesthetics and they also possess very tooth-like characteristics making them ideal for aesthetically crucial restorations in the mouth. The result is highly precise and accurate in every detail.



Physical properties

Hardness	HV 10/30	2.5
E-module	GPa	30
Weibull Module		20
Density	g/cm ³	2.1
Bending strength	MPa	150 - 160
Static Breaking Load	N	1,766
Crack toughness (SEVNB)	MPa·m ^{0.5}	1.5
Percentage elongation	%	0.5
Chemical solubility	µg/cm ²	0.0

Chemical composition

Silicon dioxide	SiO ₂	58 - 63 %
Aluminium oxide	Al ₂ O ₃	20 - 23 %
Sodium oxide	Na ₂ O	9 - 11 %
Potassium oxide	K ₂ O	4 - 6 %
Boron trioxide	B ₂ O ₃	0.5 - 2 %
Titanium dioxide	TiO ₂	< 1 %
Calcium oxide	CaO	< 1 %

VITA Enamic® Blocks

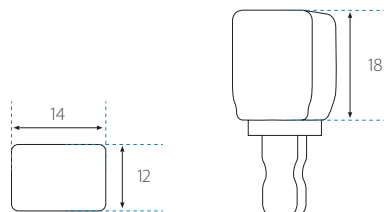
Color	Content	Art. No.	Price (€)
0M1-HT	5 pcs.	EN1EM40227630-5	115.00
1M1-HT	5 pcs.	EN1EM40627630-5	115.00
1M2-HT	5 pcs.	EN1EM40727630-5	115.00
2M2-HT	5 pcs.	EN1EM41227630-5	115.00
3M2-HT	5 pcs.	EN1EM42027630-5	115.00
4M2-HT	5 pcs.	EN1EM42827630-5	115.00

Color	Content	Art. No.	Price (€)
0M1-T	5 pcs.	EN1EM30227630-5	115.00
1M1-T	5 pcs.	EN1EM30627630-5	115.00
1M2-T	5 pcs.	EN1EM30727630-5	115.00
2M2-T	5 pcs.	EN1EM31227630-5	115.00
3M2-T	5 pcs.	EN1EM32027630-5	115.00
4M2-T	5 pcs.	EN1EM32827630-5	115.00



VITA Suprinity®

VITA SUPRINITY® enables due to its fine-grained and homogenous microstructure exact final outcomes and is characterized by a constant high toughness. The integrated translucency, luorescence and opalescence ensure a natural-looking colors and high-aesthetic results. The material is known for its excellent processing properties, such as e.g. the simple manual grinding and polishing properties. Due to the wide spectrum of indications from crowns in the anterior and posterior regions to supra-constructions on implants up to veneers, inlays and onlays the new CAD/CAM ceramic is versatily applicable.



Physical properties		
Hardness	HV 10/30	~ 7.000
E-module	GPa	~ 70
CTE (25 - 500°C)	10 ⁻⁶ K ⁻¹ CTE	~ 12.3
3-point bending strength	MPa	~ 420
3-point bending strength pre-crystallised	MPa	~ 180
Biaxial strength	%	~ 540
Crack toughness (SEVNB)	MPa*m ^{0.5}	~ 2.0
Transformation temperature	°C	~ 620
Softening temperature	°C	~ 800
Chemical solubility	µg/cm ²	~ 40

Chemical composition		
Silicia oxide	SiO ₂	56 - 64 %
Lithium oxide	Li ₂ O	15 - 21 %
Potassium oxide	K ₂ O	1 - 4 %
Phosphorous pentoxide	P ₂ O ₅	3 - 8 %
Aluminium oxide	Al ₂ O ₃	1 - 4 %
Zirconium dioxide	ZrO ₂	8 - 12 %
Ceria oxide	CeO ₂	0 - 4 %
Pigments		0 - 6 %

VITA Suprinity® Blocks

Color	Content	Art. No.	Price (€)
0M1-HT	5 pcs.	EN1S040244430-5	99.00
A1-HT	5 pcs.	EN1S043644430-5	99.00
A2-HT	5 pcs.	EN1S043744430-5	99.00
A3-HT	5 pcs.	EN1S043844430-5	99.00

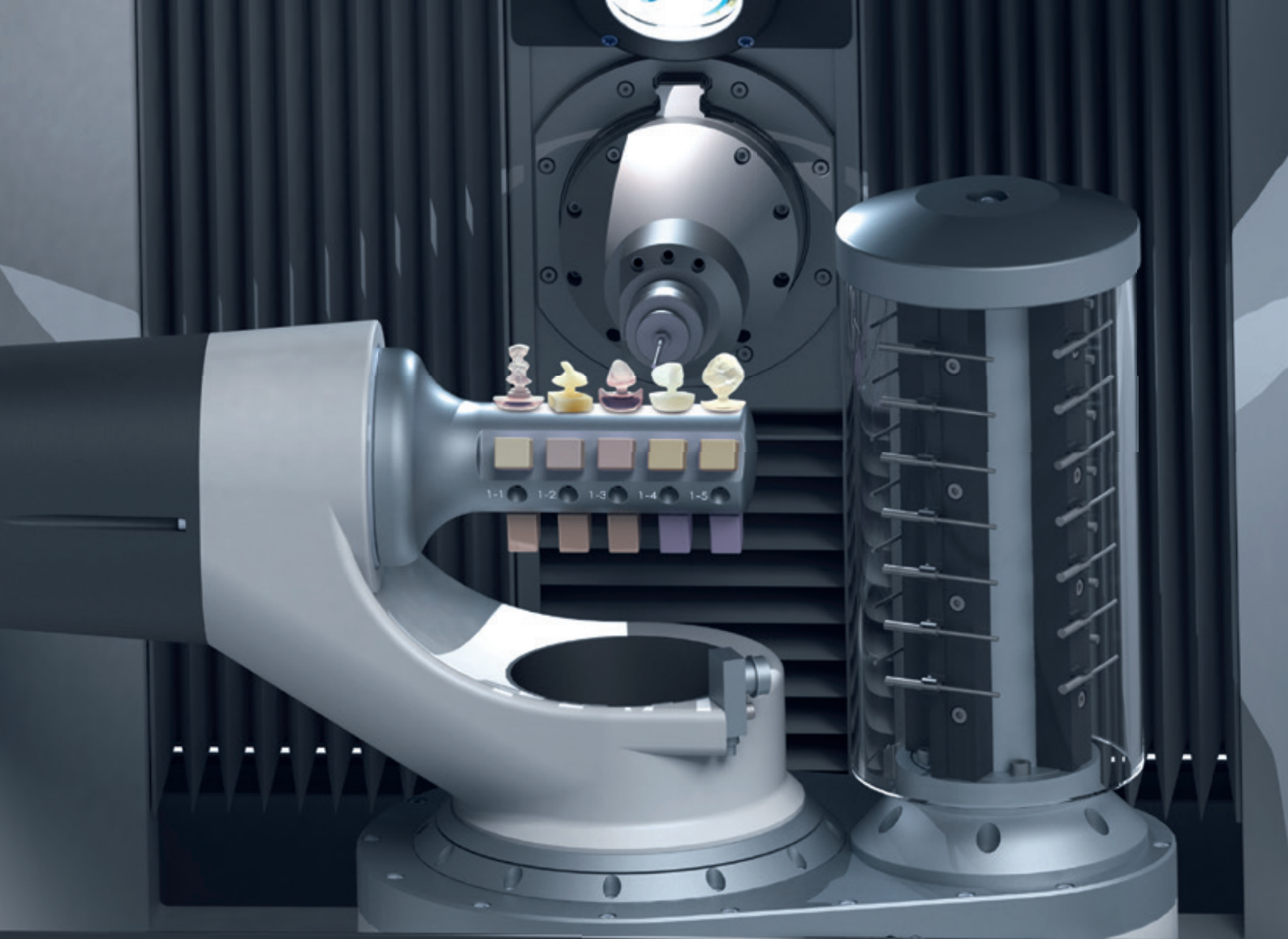
Color	Content	Art. No.	Price (€)
A3.5-HT	5 pcs.	EN1S043944430-5	99.00
B2-HT	5 pcs.	EN1S044244430-5	99.00
C2-HT	5 pcs.	EN1S044644430-5	99.00
D2-HT	5 pcs.	EN1S044944430-5	99.00

Zfx™ Glass- and Hybrid ceramic Tools

Detailed information can be found on pages 12 to 18.

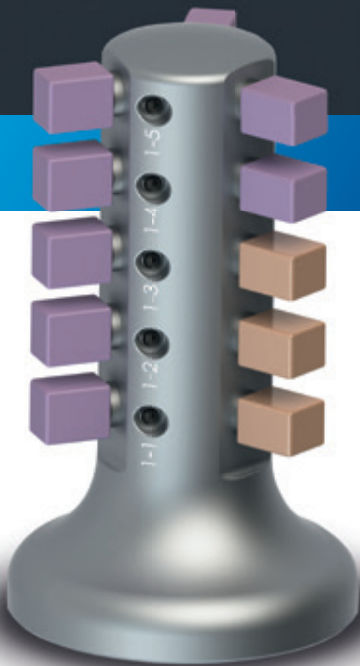


A wide range is available. For the most current information please see the safety data sheet at www.zfx-dental.com



Zfx

Inhouse5x



Zfx™ Multi-Block Support

As addition to the successful production unit Zfx™ Inhouse5x the Zfx™ Multi-Block Holder enables the processing of materials in block shape. Thus various units made of e.g. IPS e.max®, VITA Suprinity®, IPS Empress®, ... can be clamped and processed in just one milling process. The holder can be equipped with up to 15 blocks.

ivoclar
vivadent:
passion vision innovation

VITA

	Art. No.	Price (€)
Zfx™ Multi-Block Support	ZFX02002073	1,250.00

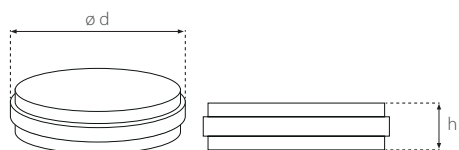
Zfx™ Wax



Zfx™ Wax

The synthetic Zfx™ Wax Blanks are suitable for the fabrication of residue free combustible wax models. They are characterized by very good milling properties and form a fine shaving that didn't stick the milling tools (no medical device).

Physical properties		
Dropping point	°C	100 - 130
Density at 20° C	g / cm ³	0.97
Solvent content organic solvents	%	0.0
Solid body content	%	100



Zfx™ Wax Blanks

Diameter d (mm)	Height h (mm)	Art. No.	Price (€)
98	20	ZFX08003030	49.00

Zfx™ Wax Tools + Zfx™ Wax Tools for screw-retained constructions

Detailed information can be found on pages 12 to 18.



Zfx™ Pre-Abutments



Zfx™ Pre-Abutments

With the Zfx™ Pre-Abutment Blanks Zfx provides the appropriate Titanium Blanks (Great 5) with pre-manufactured connecting geometries for all common implant systems. The Pre-Abutment Processing Upgrade for the Zfx™ Inhouse5x offers the possibility to produce individual abutments in a time-saving and cost-effective manner in your own lab.

Physical properties		
Relative Density	g/cm ³	5 - 6
Melting Point / Freezing Point	°F	> 2,800
Chemical composition		
Titanium	Ti	90 - 98 %
Aluminium	Al	3 - 6 %
Vanadium	V	2 - 4 %
Copper	Cu	0 - 3 %
Zinn	Sn	0 - 2 %
Zirconium	Zr	0 - 1 %

Zfx™ Pre-Abutment Blanks including screw

Implant Systems	Diameter (mm)	Art. No.	Price (€)
Bone Level® by Straumann Institut	3.3	ZFX18000100	39.00
Bone Level® by Straumann Institut	4.1 - 4.8	ZFX18000110	39.00
SynOcta® by Straumann Institut	4.8	ZFX18000120	39.00
SynOcta® by Straumann Institut	6.5	ZFX18000130	39.00
OsseoSpeed® by Dentsply Implants (Astratech)	3.0	ZFX18000140	39.00
OsseoSpeed® by Dentsply Implants (Astratech)	3.5 - 4.0	ZFX18000150	39.00
OsseoSpeed® by Dentsply Implants (Astratech)	4.5 - 5.0	ZFX18000160	39.00
Replace® by Nobel Biocare	3.5	ZFX18000170	39.00
Replace® by Nobel Biocare	4.3	ZFX18000180	39.00
Replace® by Nobel Biocare	5.0	ZFX18000190	39.00
Replace® by Nobel Biocare	6.0	ZFX18000200	39.00
Active® by Nobel Biocare	3.5	ZFX18000210	39.00
Active® by Nobel Biocare	4.3 - 5.0	ZFX18000220	39.00



NEW

Implant Systems	Diameter (mm)	Art. No.	Price (€)
Brånemark® by Nobel Biocare	3.5	ZFX18000230	39.00
Brånemark® by Nobel Biocare	4.1	ZFX18000240	39.00
Brånemark® by Nobel Biocare	5.1	ZFX18000250	39.00
Frialit-Xive® by Dentsply Implants	3.0	ZFX18000260	39.00
Frialit-Xive® by Dentsply Implants	3.4	ZFX18000270	39.00
Frialit-Xive® by Dentsply Implants	3.8	ZFX18000280	39.00
Frialit-Xive® by Dentsply Implants	4.5 - 6.5	ZFX18000290	39.00
EV by Dentsply Implants (Astratech)	3.0	ZFX18000300	39.00
EV by Dentsply Implants (Astratech)	3.6	ZFX18000310	39.00
EV by Dentsply Implants (Astratech)	4.2	ZFX18000320	39.00
EV by Dentsply Implants (Astratech)	4.8	ZFX18000330	39.00
EV by Dentsply Implants (Astratech)	5.4	ZFX18000340	39.00
Certain® by Biomet 3i	3.4	ZFX18000350	39.00
Certain® by Biomet 3i	4.1 - 6.0	ZFX18000360	39.00
ExHex® by Biomet 3i	3.4	ZFX18000370	39.00
ExHex® by Biomet 3i	4.1 - 6.0	ZFX18000380	39.00
Tapered Screw Vent® by Zimmer	3.5	ZFX18000390	39.00
Tapered Screw Vent® by Zimmer	4.5	ZFX18000400	39.00
Tapered Screw Vent® by Zimmer	5.7	ZFX18000410	39.00
Eztetic Implant® by Zimmer	2.9	ZFX18000420	39.00

Zfx™ Titanium Pre-Abutment Tools

Detailed information can be found on pages 12 to 18.



Zfx™ Construction components

Implant abutments, bars and implant-supported screw-retained bridges which are 100% compatible with the selected implant system are designed with the Zfx™ CAD software.

A number of connector geometries which ensure compatibility with commonly used implant systems are stored in the library of the Zfx™ CAD software. The user first selects the implant used and then designs the implant structure.

In doing so, the compatible connector type is automatically taken into account in the design proposed by the software. When modelling is complete, the entire data record for the design together with information on the titanium base is sent to the milling center where the required element is produced. Implant abutments are available with screwed or glued titanium base.



The current catalogue with all components can be found at zfx-dental.com

Zfx™ Construction components



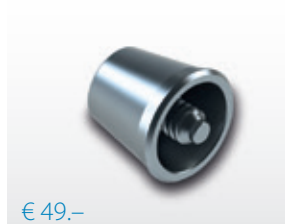
€ 49.–

Titanium bases with rotation protection (Regular Design and/or Small Design)



€ 49.–

Titanium bases without rotation protection (Regular Design and/or Small Design)



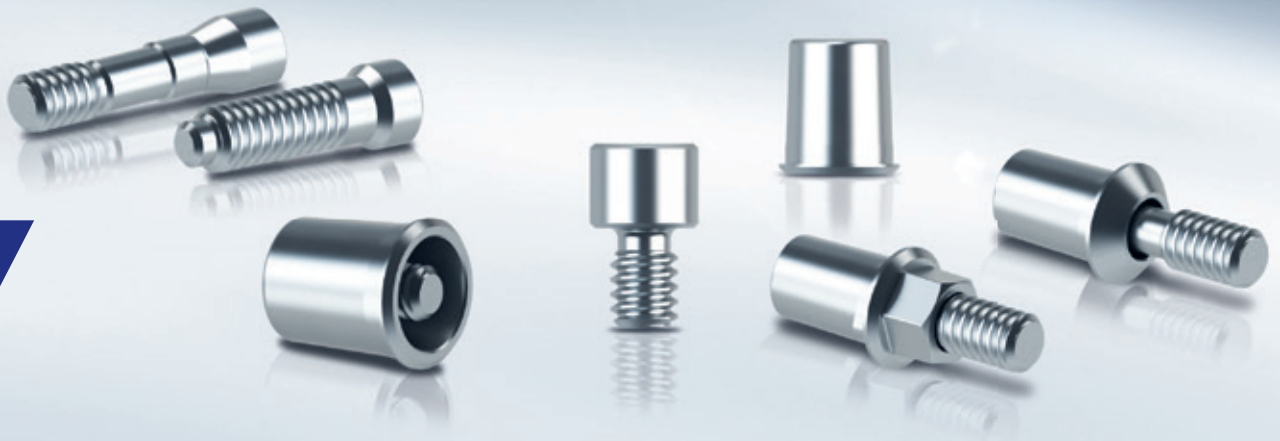
€ 49.–

Multi-Unit titanium bases



€ 19.–

Bridge screws for titanium, cobalt-chromium and zirconium constructions



Zfx compatible implant systems and types

Implant manufacturer	Implant Systems				
BIOMET 3I	Certain®	Conical®	IOL®	Low Profile®	ExHex®
BIOHORIZONS	Tapered Internal®				
BREIDENT	SKY uni.cone®	SKY fast and fixed®	SKY®		
CAMLOG	Screw Line®	VARIO SR®			
DENTIUM	Superline & Implantium				
DENTSPLY IMPLANTS (ASTRATECH)	EV	OsseoSpeed®	UniAbutment®		
DENTSPLY IMPLANTS	Multi-Purpose®	Frialit-Xive®			
MEGAGEN	AnyOne®	AnyRidge®	EZ Plus®	Rescue Internal®	
MIS	Internal Hex®				
NOBEL BIO CARE	Active®	Brånemark®	Multi-unit®	Replace®	
OSSTEM	GS & TS System®				
P-I	Amplified®	Conical Abutment®	External Hexagon®	Morse Taper®	
STRAUMANN INSTITUT	Bone Level®	Mutli-Base®	SynOcta®	Octa® (External Octagon)	
SWEDEN & MARTINA	Global®	Outlink2®	Premium Kohno®		
THOMMEN MEDICAL	SPI®				
ZIMMER	Tapered Screw Vent®	Shoulder Abutment®	SwissPlus®	Tapered Abutment®	Eztetic Implant®



€ 19.-

Screws for zirconium and cobalt-chromium / titanium



2 PC. IN THE SET
€ 139.-

Evolution Matchholder



2 PC. IN THE SET
€ 149.-

IntraScan Matchholder
in 2 sizes (H4 and H7)



2 PC. IN THE SET
€ 44.-

Model analogue (for digital and standard models)

Zfx™ Accessories

Zfx™ Scan Spray

The Zfx™ Scan Spray prevents reflection for increased accuracy and speed. The spray is non-toxic and can be removed, leaving no residue, with water.

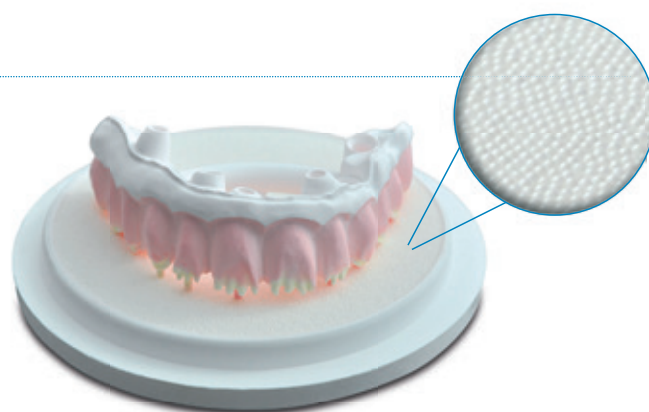
Article	Dimension	Art. No.	Price (€)
Zfx™ Scan Spray	75 ml	ZFX02000278	14.90
Zfx™ Scan Spray	200 ml	ZFX02001248	29.00
Zfx™ Scan Spray Superfine	200 ml	ZFX02001250	39.00



Zfx™ Sintering Beads

The sinter plate is filled with a layer of sintering beads. This provides a sliding surface on which the zirconia structures can contract without distortion or tension during the sintering process.

Article	Dimension	Art. No.	Price (€)
Zfx™ Sintering Beads	200 g	ZFX02002658	69.00
Sinter plate	98 mm	105264	280.00



Zfx™ sinter pearls (30 - 60 µm) for a precise sintering procedure



Zfx™ Digital-intraModel system

The Zfx™ Digital-intraModel system enables the computer-aided production of physical models based on intraoral scans. The system consists of a software module used to define the emergence profile, segment the model and adjust the friction on the base plate, and the corresponding reusable base plates, pins and an intercuspidator. The resin models are produced in a Zfx milling center either using laser sintering or milling technology. The models are always delivered with suitable model analogs, which are positioned in the exact height and angle using a patented mechanism.

Delivery contents Set

- × 1 pc. Intercuspidator
- × 2 pc. Zfx™ Plates
- × 1 pc. Check Block
- × 30 pc. Metal Pins
- × 1 pc. Hex driver (HXLGR1.25), Long with GemLock for Zfx™ IntraScan Matchholders

Article	Art. No.	Price (€)
Zfx™ Digital-intraModel system Set	ZFX02002065	490.00

Additional component accessories

	Art. No.	Price (€)
Torque wrench for Zfx™ Evolution Matchholders	ZFX02002067	89.00
Hex driver, Long Standard for Zfx™ IntraScan Matchholders Torque wrench adapter without GemLock	HXL1.25	99.00
Hex driver, Long with GemLock Retention for Zfx™ IntraScan Matchholders with GemLock Retention	HXLGR1.25	114.00
Zfx™ Metal Pin Set (50 Pc.)	ZFX02002524	99.00



Torque wrench for Matchholders of the Zfx™ Evolution series

Hex driver, Long Standard for Zfx™ IntraScan Matchholders

Hex driver, Long with GemLock Retention for Zfx™ IntraScan Matchholders

Zfx™ Metal Pin

Model analogs for all current implant systems (see pages 44 and 45)

Zfx™ Accessories

DYMO LabelManager for Zfx™ Inhouse5x

The low weight and compact label printer is ideally suited for the labeling of the Zfx™ ToolCabinet.

Article	Art. No.	Price (€)
DYMO LabelManager	ZFX020100023	44.90



DYMO LabelManager incl. Zfx™ ToolCabinet

The Zfx™ ToolCabinet for clear safekeeping of Zfx™ milling tools.

Article	Art. No.	Price (€)
DYMO LabelManager incl. Zfx™ ToolCabinet	ZFX020100025	173.90





From page 42 onwards you can find a detailed overview of the Zfx™ Pre-Abutments

Zfx™ Pre-Abutment Multi-Blank Holder

The Pre-Abutments Processing Upgrade for the Zfx™ Inhouse5x offers the opportunity for the time- and cost-effective fabrication of individual abutments in your own lab. Zfx provides with the Zfx™ Pre-Abutment Blanks the suitable titanium blanks including pre-manufactured connection geometries for all current implant systems.



	Art. No.	Price (€)
Zfx™ Pre-Abutment Multi-Blank Holder	ZFX02002069	2,500.00

Delivery: Standard Express (+ € 29.00 Service fee)

Company:

No.	Zfx Art. No.	Description	Quantity	Price in Euro
1.				
2.				
3.				
4.				
5.				
6.				
7.				
8.				
9.				
10.				
11.				
12.				
13.				
14.				
15.				

Fax +49 8131 33 244 10 or via e-mail: order@zfx-dental.com

Date:

Signature:

Company stamp

Zfx™ Process Accuracy

Highest fitting without sending models and black box!



The two-piece Zfx™ Scan bodies for multiple usage without any deficit of accuracy are produced with an innovative code system, that enables the automatic recognition of the implant type and prevents application errors. Thus, in combination with the own-developed torque wrench for the Zfx™ Evolution plus, an accuracy is ensured of $< 5 \mu\text{m}$

The Zfx™ Evolution plus enables a measuring accuracy (VDI test procedure) in the solid of $< 9 \mu\text{m}$

PROCESS
ACCURACY
 $< 20 \mu\text{m}$



The industrial manufacturing with 5-axis simultaneous machining achieves an accuracy of $< 5 \mu\text{m}$





www.zfx-dental.com

Zfx GmbH

Kopernikusstraße 27
85221 Dachau, Deutschland
Tel. +49 81 31 33 244 - 0
Fax +49 81 31 33 244 - 10
order@zfx-dental.com